

Intensive courses on the use of cardiac CT imaging in clinical practice by an internationally recognized team of experienced cardiologists and radiologists, with mentored interpretation of cases on dedicated workstations

Introductory Course (2 days)

Learning objectives:

- Understanding and implementation of the relevant principles of cardiac CT imaging.
- Application of tips and tricks to optimize data acquisition and interpretation, including contrast administration protocols, dose saving and comprehensive post processing.
- Implementation of evidence-based cardiac CT applications in clinical practice.
- Interpretation of coronary artery disease, bypass grafts and stents on cardiac CT.

Mentored reading of 50+ CT cases with angiography/echo/MRI confirmation (towards ACC/AHA level 1 certification) on Siemens Syngo Via workstations (2 participants per WS), combined with practical, clinically oriented, interactive lectures on indications, data acquisition and image interpretation. The course language is English.

Advanced Course (3 days)

Learning objectives:

- In-depth evaluation of coronary artery disease.
- Addition of advanced cardiac CT applications, including stress perfusion and infarct imaging CT, congenital and valvular heart disease.

Each mentored reading session is preceded by a short clinically oriented lecture on data acquisition, clinical use and image interpretation. In total 100+ CT cases will be interpreted with angiography/echo/MRI confirmation (towards ACC/AHA level 2 certification) on Siemens Syngo Via workstations (2 participants per WS). The course language is English.

Course directors

Ricardo Budde, *radiologist*
Alexander Hirsch, *cardiologist*

Faculty

Mohamed Attrach
Sara Boccacini
Ronald Booij
Adriaan Coenen
Admir Dedic
Marcel Dijkshoorn
Marisa Lubbers
Bob Meijboom
Fay Nous
Nils Planken
Laurens Swart

Venue

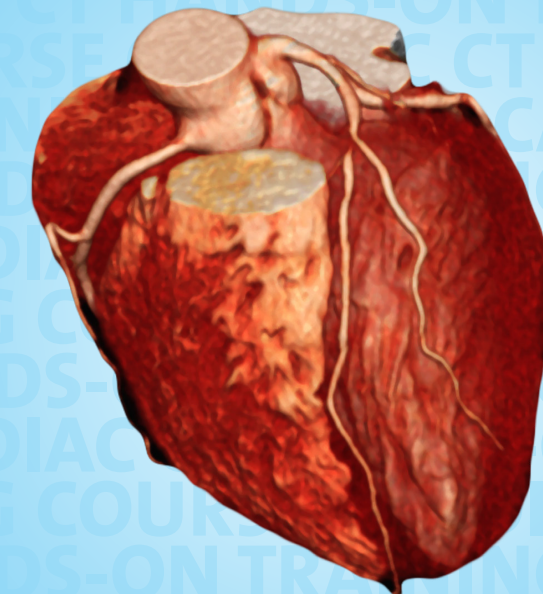
SkillsLab Erasmus MC,
Rotterdam, the Netherlands

Accreditation

NVVC – Netherlands Society
of Cardiology
NVVR – Netherlands Society
of Radiology

Registration

www.skillslab.nl



Address and information

Erasmus MCSkillsLab
& Simulation Center
Wytemaweg 80
3015 CN Rotterdam
The Netherlands

Phone +31 10 7038006
Fax +31 10 7038008
E-mail skillslab@erasmusmc.nl
Or r.budde@erasmusmc.nl
Site www.skillslab.nl

Cardiac CT

Hands-on Training Courses

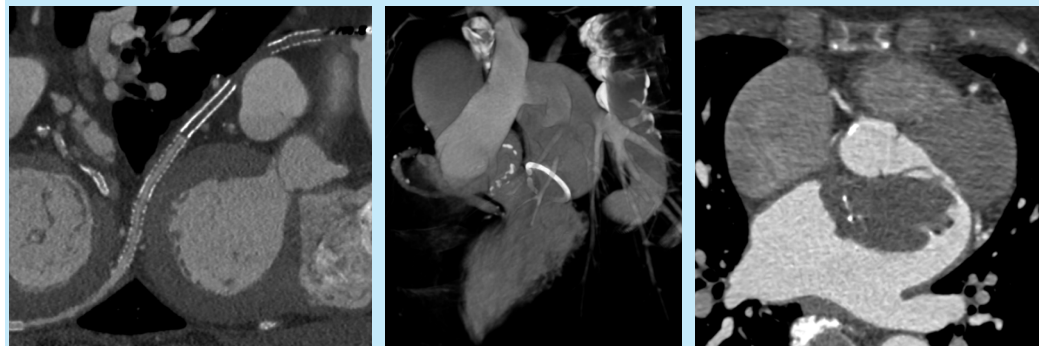
Introductory Course (2 days) & Advanced Course (3 days)

8-12 October 2018

Cardiac CT Hands-on Training Courses

Introductory Course (2 days)

Advanced Course (3 days)



Program Day 1

- 8:30-17:00** Two hour reading sessions with lunch and coffee breaks in between
- CT basics: principles and development, data acquisition and optimization
 - Introduction to SyngoVia workstation: buttonology
 - Cardiac and systematic coronary CT angiography reading: calcium score, coronary artery disease, abnormal anatomy, stenosis and occlusions.
 - Great thoracic vessels: normal anatomy and pathology

Program Day 2

- 8:30-17:00** Two-hour reading sessions with lunch and coffee breaks in between
- Coronary artery disease, early detection of disease
 - Coronary anomalies and variants
 - CT in stable chest pain
 - Structural heart disease

The maximum number of participants is 18 cardiologists and radiologists.

The course fee is € 875,- for medical specialists, € 675,- for residents, which includes lunch and other refreshments throughout the course, dinner on the first night, course syllabus with slides, relevant literature, guidelines. Recommendations for accommodation are available on request.

Next courses: further dates will be announced on the website.

The course fee for both courses combined is € 1.950,- (€ 1.350,- for residents).

Program Day 1

- 8:30-17:00** Two-hour reading sessions with lunch and coffee breaks in between
- Stable chest pain cases
 - Imaging of coronary stents
 - Functional CT applications
 - Congenital heart disease in young and adult patients

Program Day 2

- 8:30-17:00** Two-hour reading sessions with lunch and coffee breaks in between
- Valvular heart disease: native and prosthetic hearts valves including endocarditis
 - TAVI and other CT guided interventions
 - Patients with heart failure
 - Structural heart disease 2

Program Day 3

- 8:30-16:30** Two-hour reading sessions with lunch and coffee breaks in between
- Valvular heart disease: native and prosthetic hearts valves including endocarditis
 - TAVI and other CT guided interventions
 - Patients with heart failure
 - Structural heart disease 2

The maximum number of participants is 18 cardiologists and radiologists.

The course fee is € 1.275,- for medical specialists, € 975,- for residents. The course fee includes lunch and other refreshments throughout the course, course syllabus including slides, relevant literature, guidelines. Recommendations for accommodation available on request.

Next courses: further dates will be announced on the website

The course fee for both courses combined is € 1.950,- (€ 1.350,- for residents).